



BANCA D'ITALIA
EUROSISTEMA

BANCODE **ESPAÑA**
Eurosistema



Target2-Securities User Handbook

R2026.JUN

22 January 2026

1 Sitemap for T2S GUI

1.1 Reader's Guide

The sitemap annex is structured along the first and the second GUI menu level. It provides you with a formalised illustration of all screens (pictured as rectangles) and their related buttons (pictured as arrows). The illustration helps you to get an overview of all GUI screens and their interrelation, indicated by the arrows.

General layout of a sitemap In general, each sitemap has the same layout. The header of the sitemap always indicates the GUI menu item pictured by the sitemap. The first 3 lines represent the 3 main menu levels.

Menu Name	
Menu Level 1	
Menu Level 2	
Menu Level 3	

Illustration 1: Sitemap menu levels – GUI path

In lines 4 to 6, the single GUI screens are pictured following their business logic, i.e. starting with *search/list* screens in line 4, *details* or *enter* screens in line 5 and finishing with *revisions/audit trail – list* screens in line 6.

Search / List Screen	
Details / Enter Screen	
Revision / Audit Trail	

Illustration 2: Sitemap menu levels - screens

Within these lines, regular rectangles represent a menu item, rounded rectangles represent a screen.

Menu Securities	
Menu Level 1	M1 Securities
Menu Level 2	M1.1 Securities Account M1.2 Settlement
Menu Level 3	M1.1.1 Securities Positions M1.1.2 Securities Postings M1.1.3 Securities Restriction M1.2.1 Settlement Instructions M1.2.2 Intra-Position Movements M1.2.3 Maintenance Securities Instructions M1.2.4 Settlement Instruction Allegements M1.2.5 Data Changes M1.2.6 Securities Positions

Illustration 3: Menu item and sitemap screen illustration

Interrelation between screens

Arrows between the rectangles represent an interrelation, while the button that has to be clicked on to jump from one screen to another is written across the corresponding arrow.

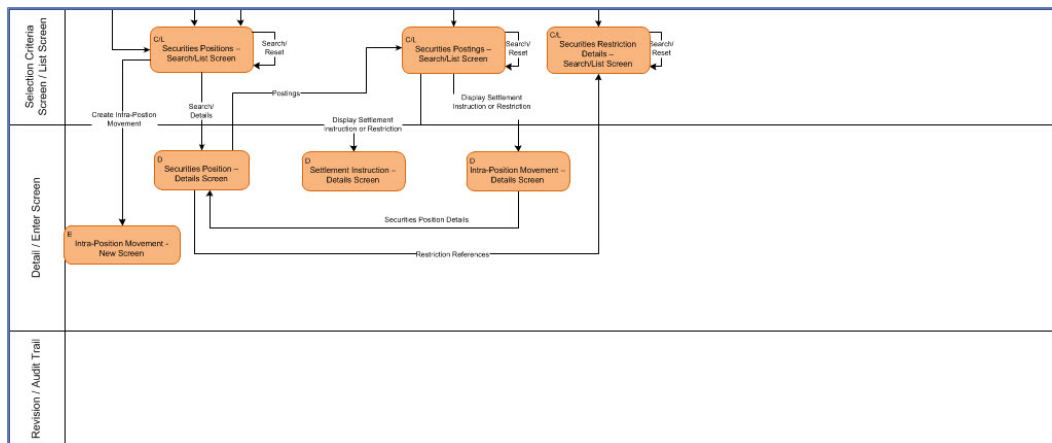


Illustration 4: Screen interrelation

Menu item and screen rectangles

The screen rectangles follow the same colour-coding as the GUI (see menu structure). The classification found in the top left corner of each rectangle provides the following detailed information:

- Capital M for menu followed by max. 3 digits indicating the main menu item (1 for securities, 2 for cash, 3 for services, 4 for static data, 5 for monitoring) and following menu levels.
- Screen classification (C/L for *search/list* screen, C for *search* screen, L for *list* screen, D for *details* screen, E for *enter* screen).

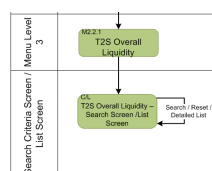


Illustration 5: Sitemap screen with classification and with button

Screens with a different colour

On some sitemaps you will also find screens illustrated in a different colour than it is foreseen for the respective T2S menu. These particular screens represent an alternative navigation to the same respective screen. These specific screens appear on the same menu level than the regular screens.

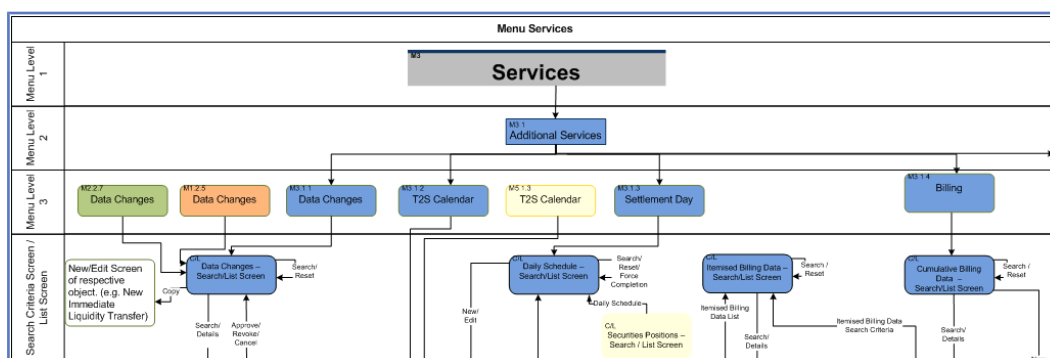


Illustration 6: Screens with a different colour

Interrelation between sitemap parts

Because of the size of the sitemap it has been split into several parts. You can recognise the use of several sitemap parts by an arrow leading to the next sitemap part.

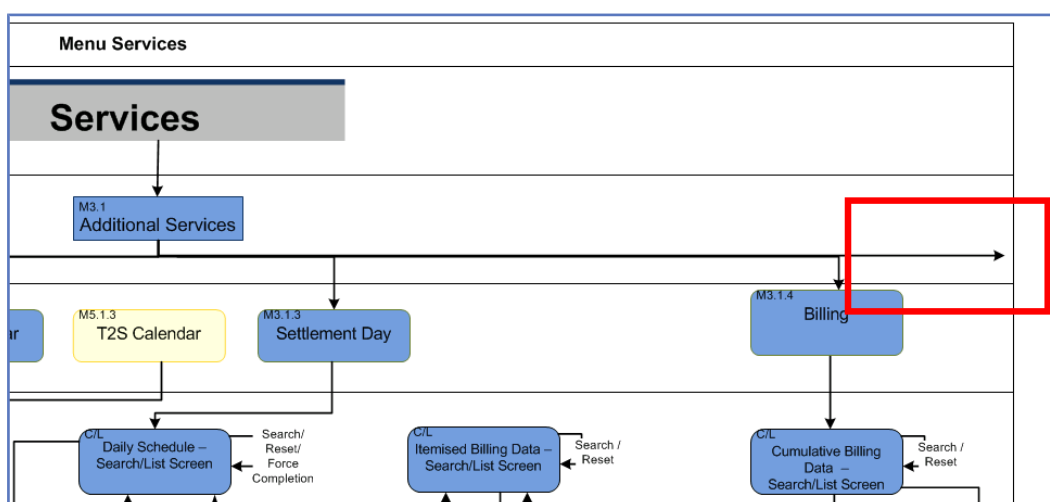


Illustration 7: Sitemap part interrelation

The static data sitemap for example is divided into 14 different sitemaps because of the wealth of information. Therefore it is recommended to read the sitemap from the top to the bottom and then from the left hand-side to the right hand-side.

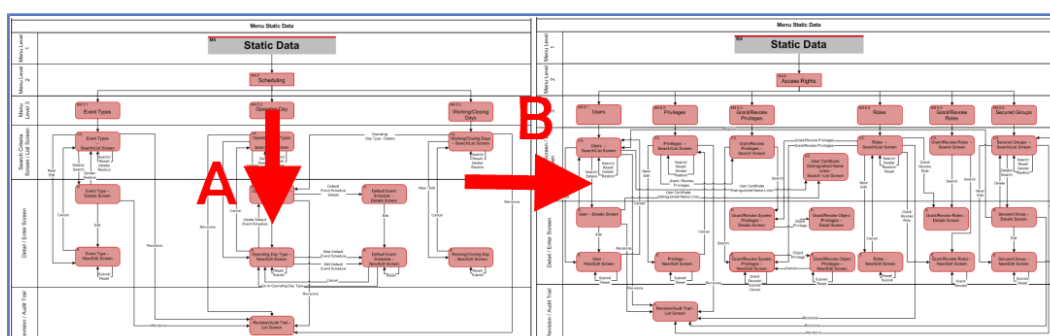
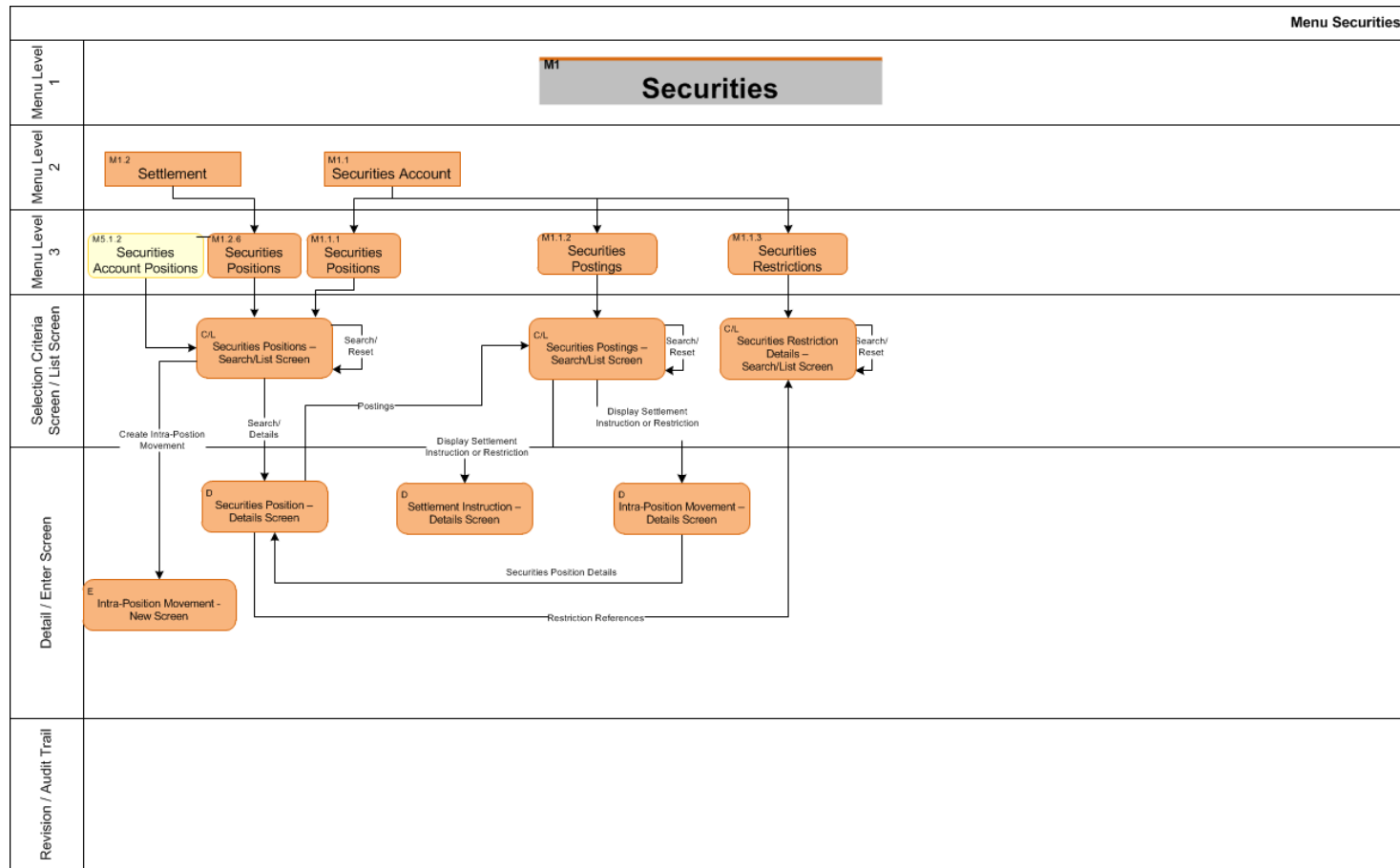


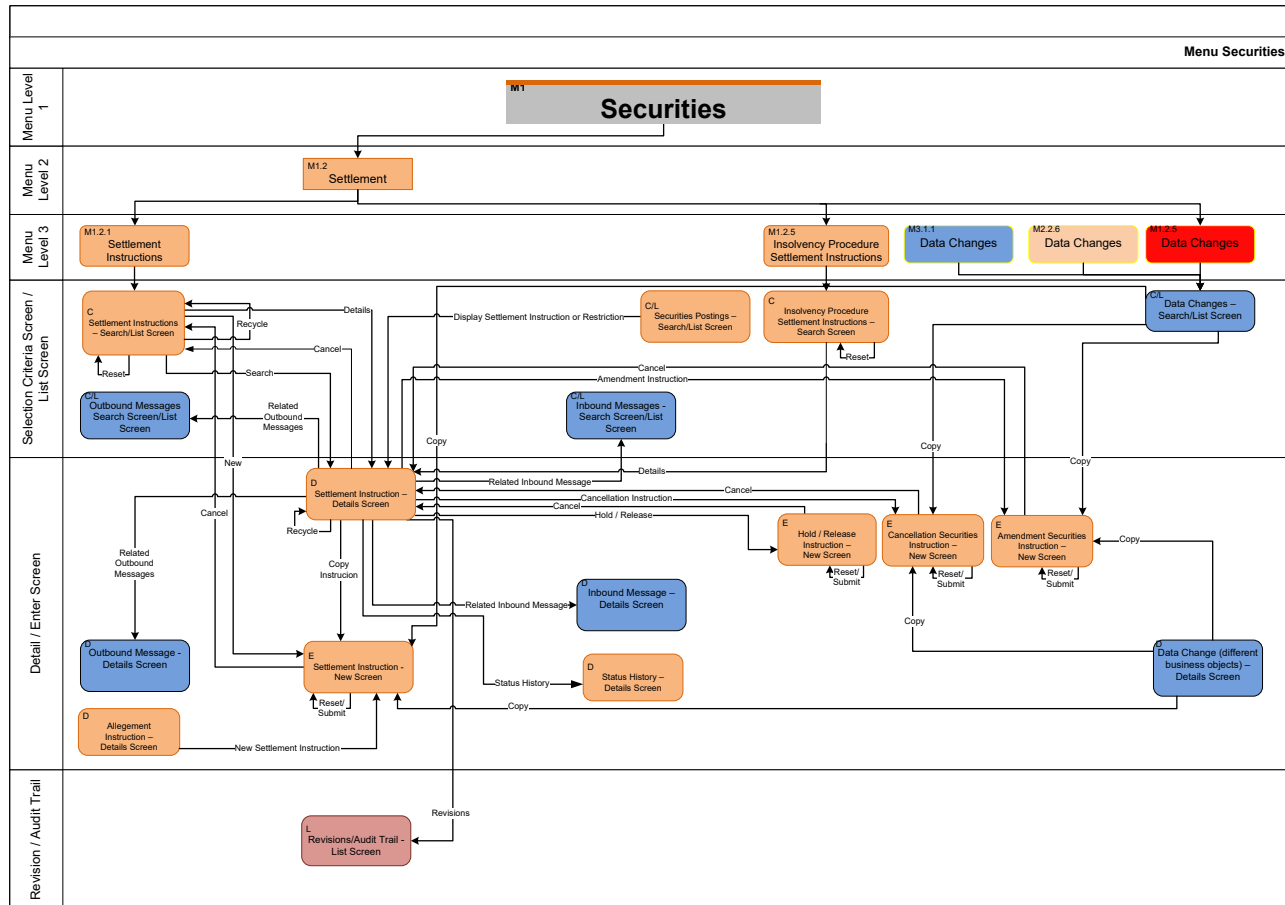
Illustration 8: How to read a sitemap

1.2 Securities

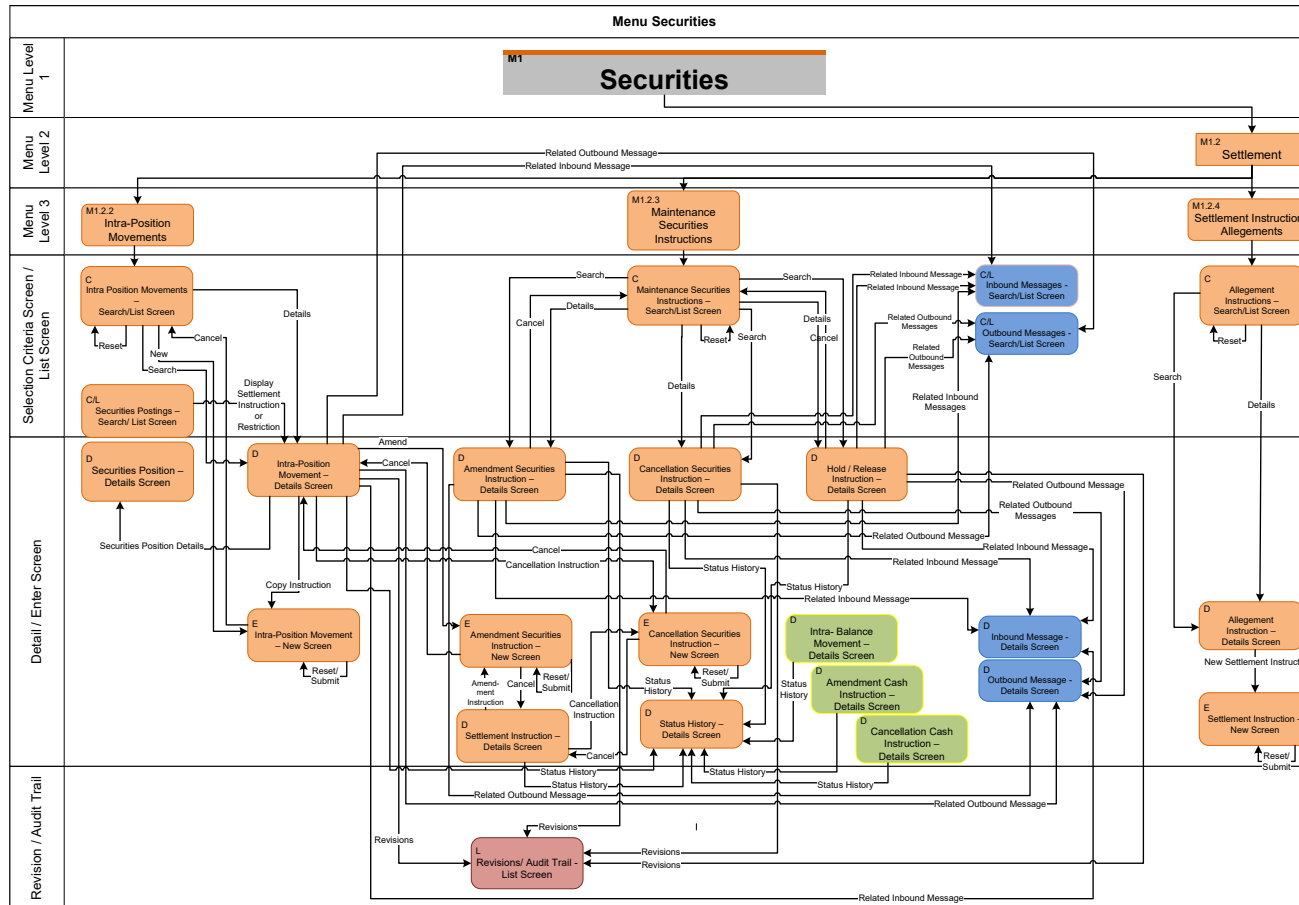
1.2.1 Securities Account



1.2.2 Settlement

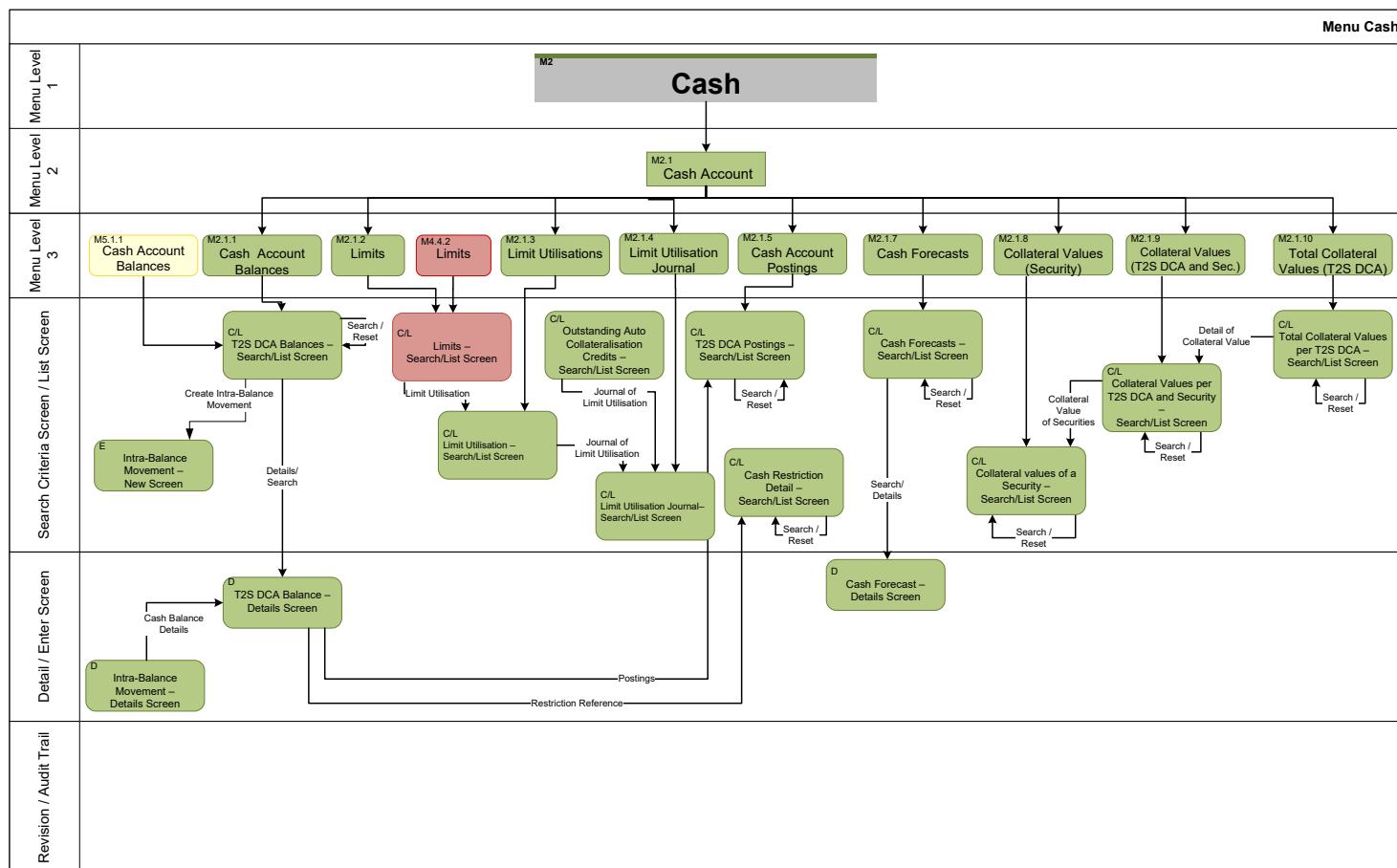


1.2.3 Settlement II

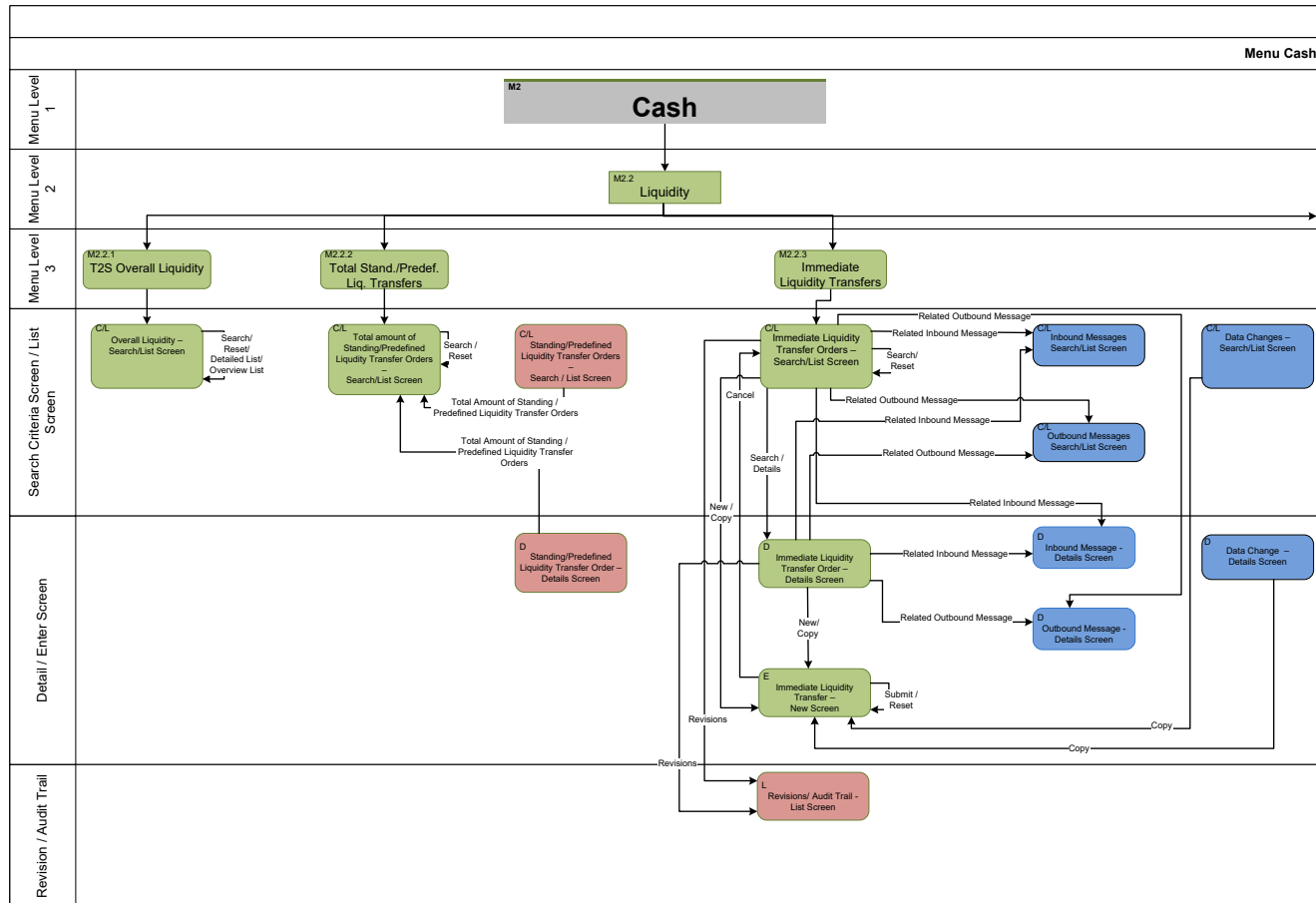


1.3 Cash

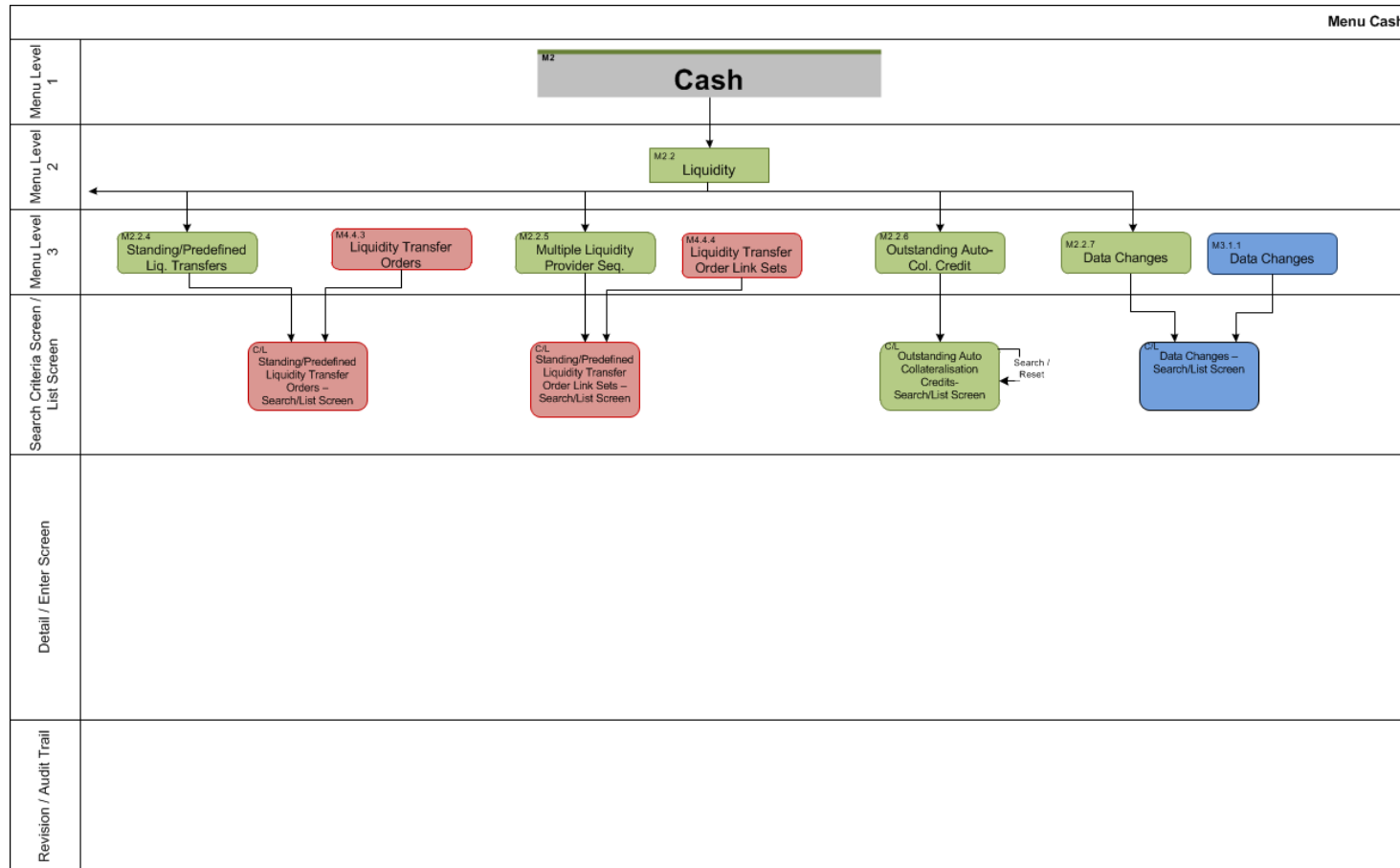
1.3.1 Cash Account



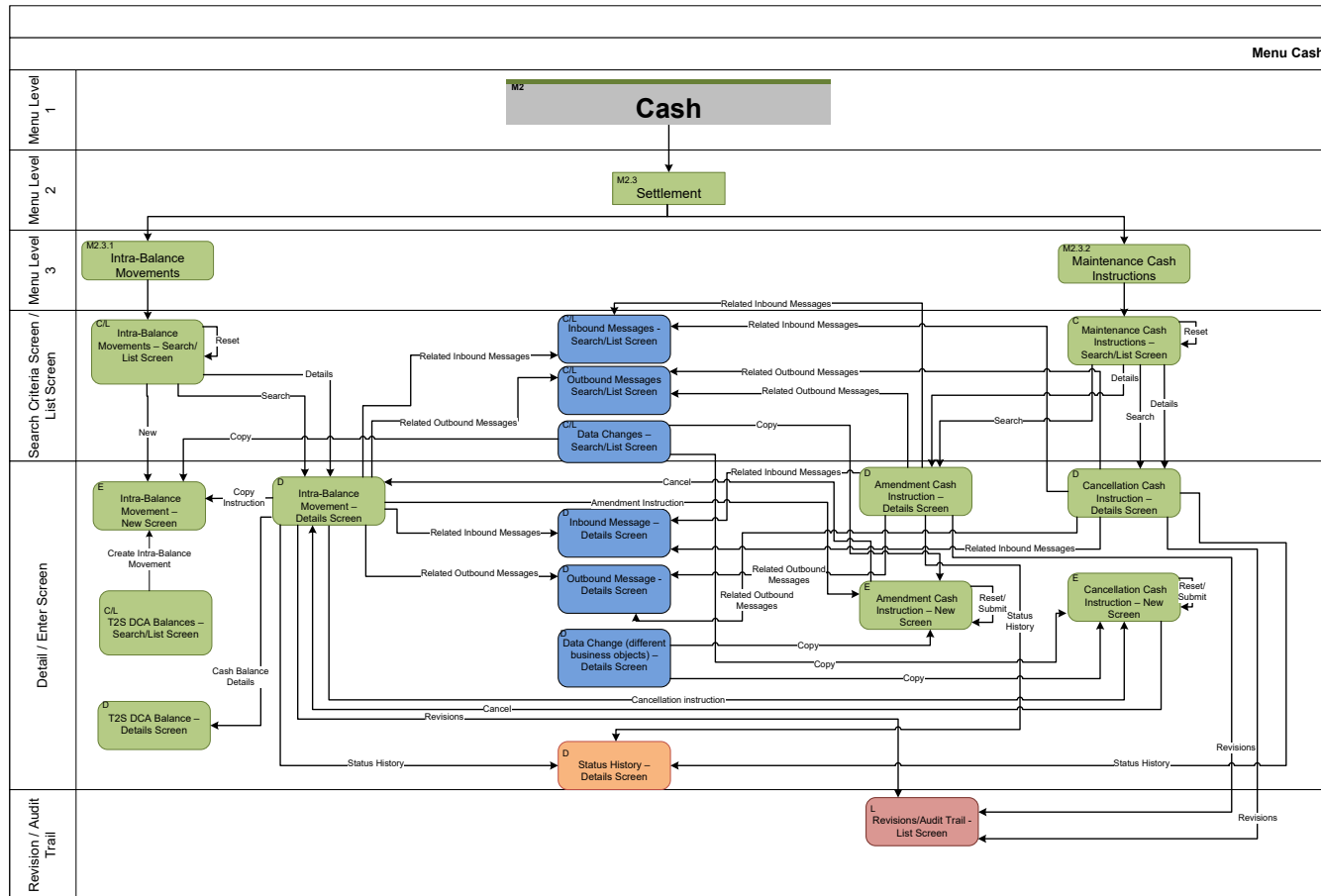
1.3.2 Liquidity



1.3.3 Liquidity II

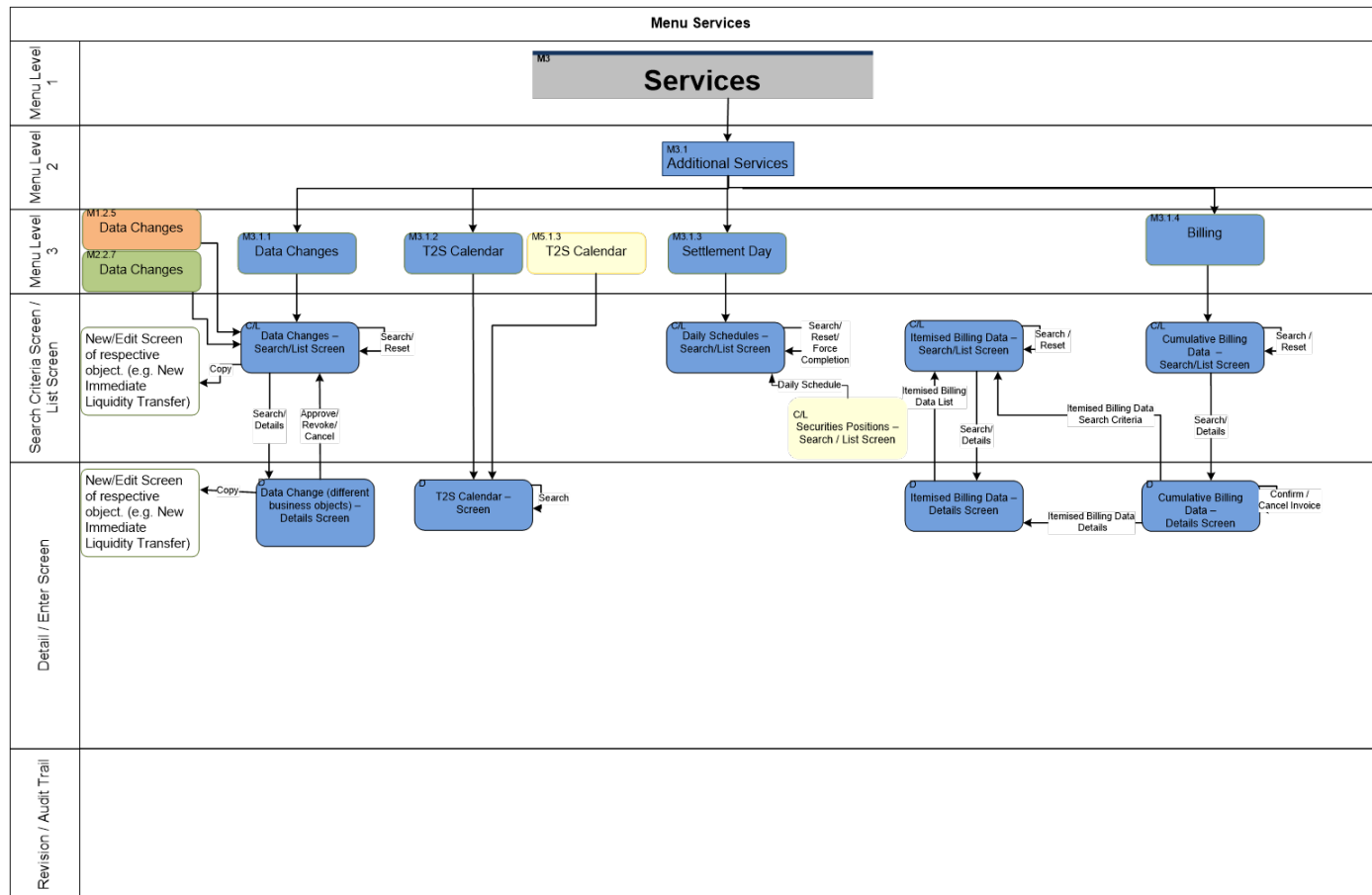


1.3.4 Settlement

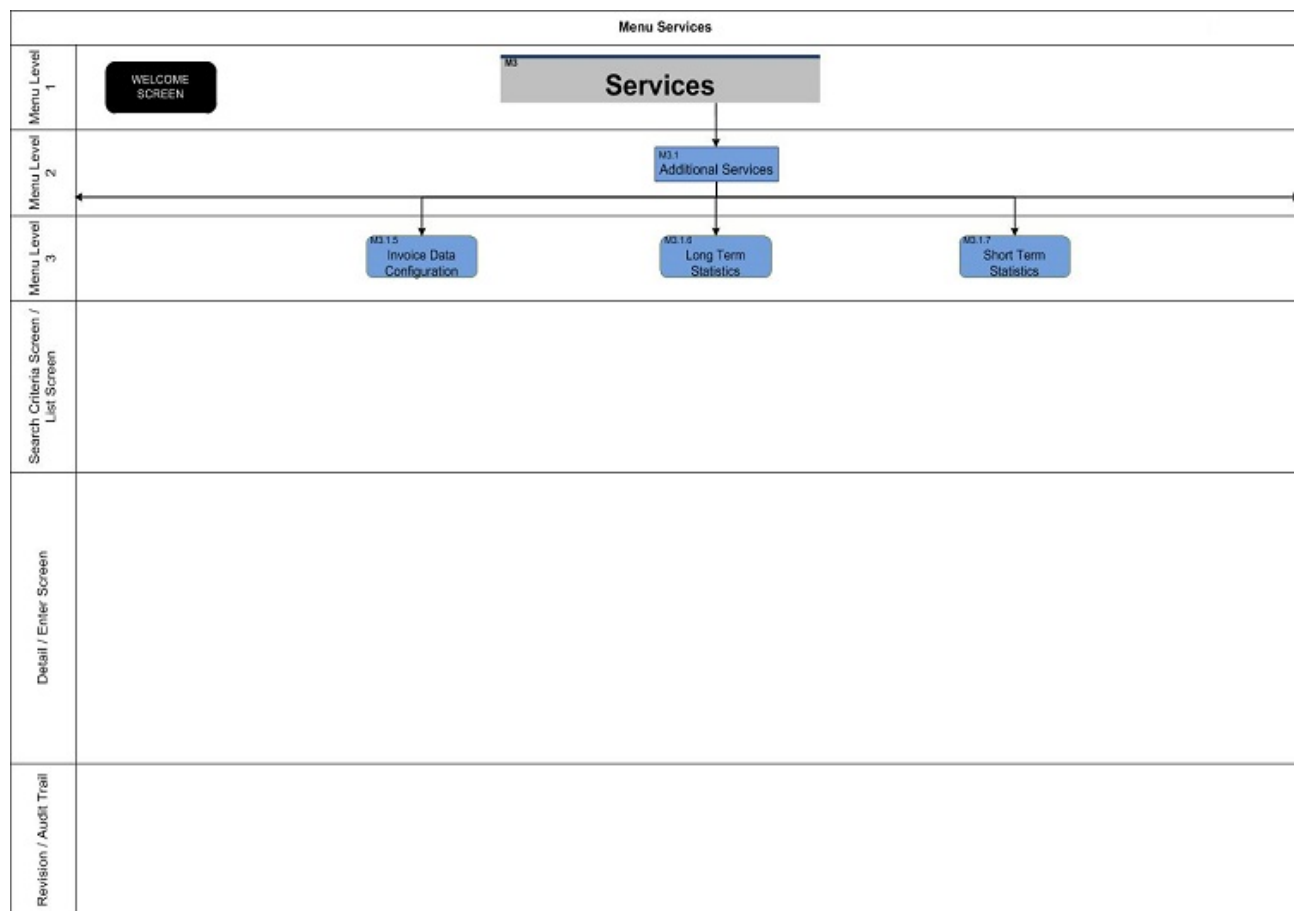


1.4 Services

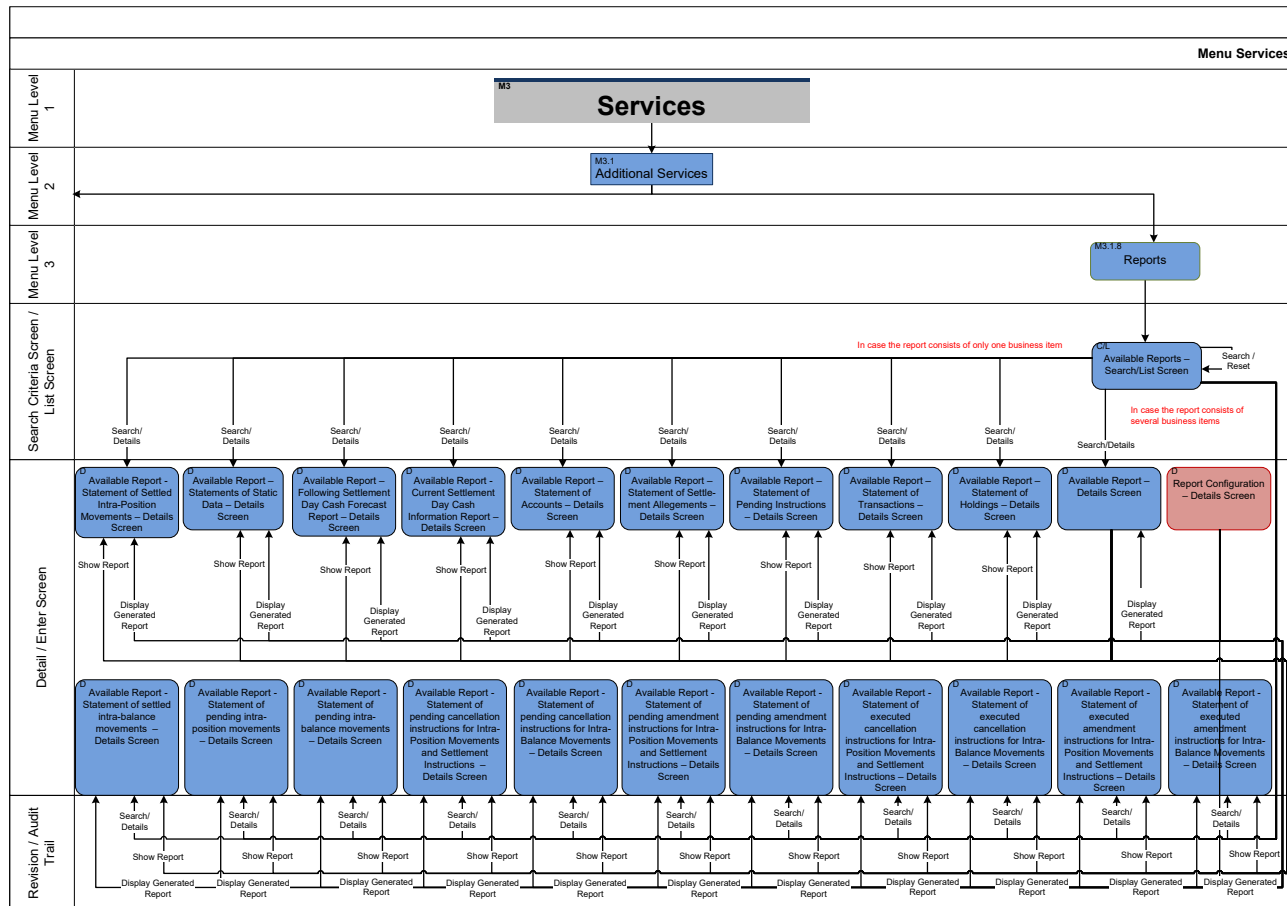
1.4.1 Additional Services



1.4.2 Additional Services II



1.4.3 Additional Services III



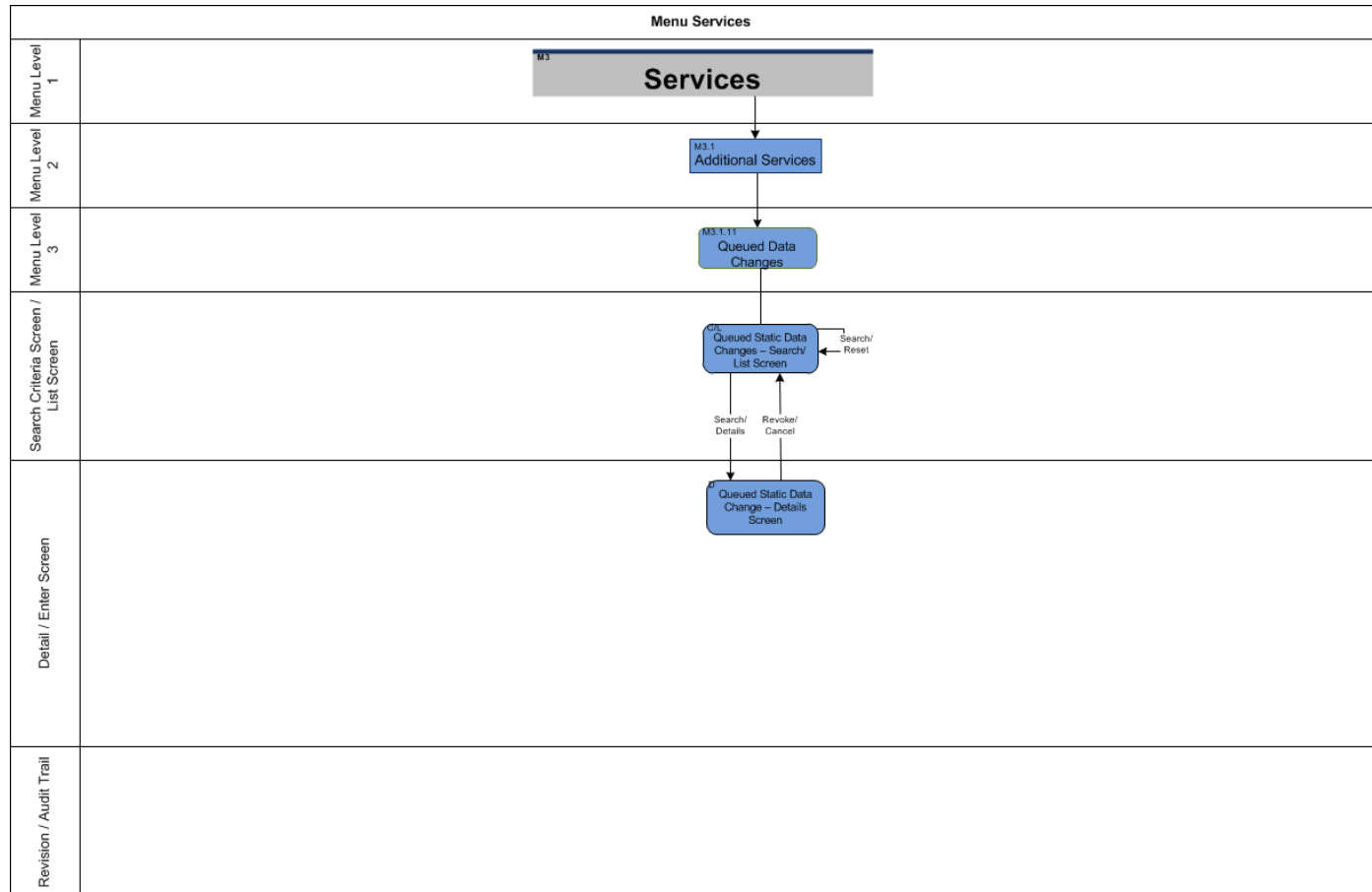
1.4.4 Additional Services IV



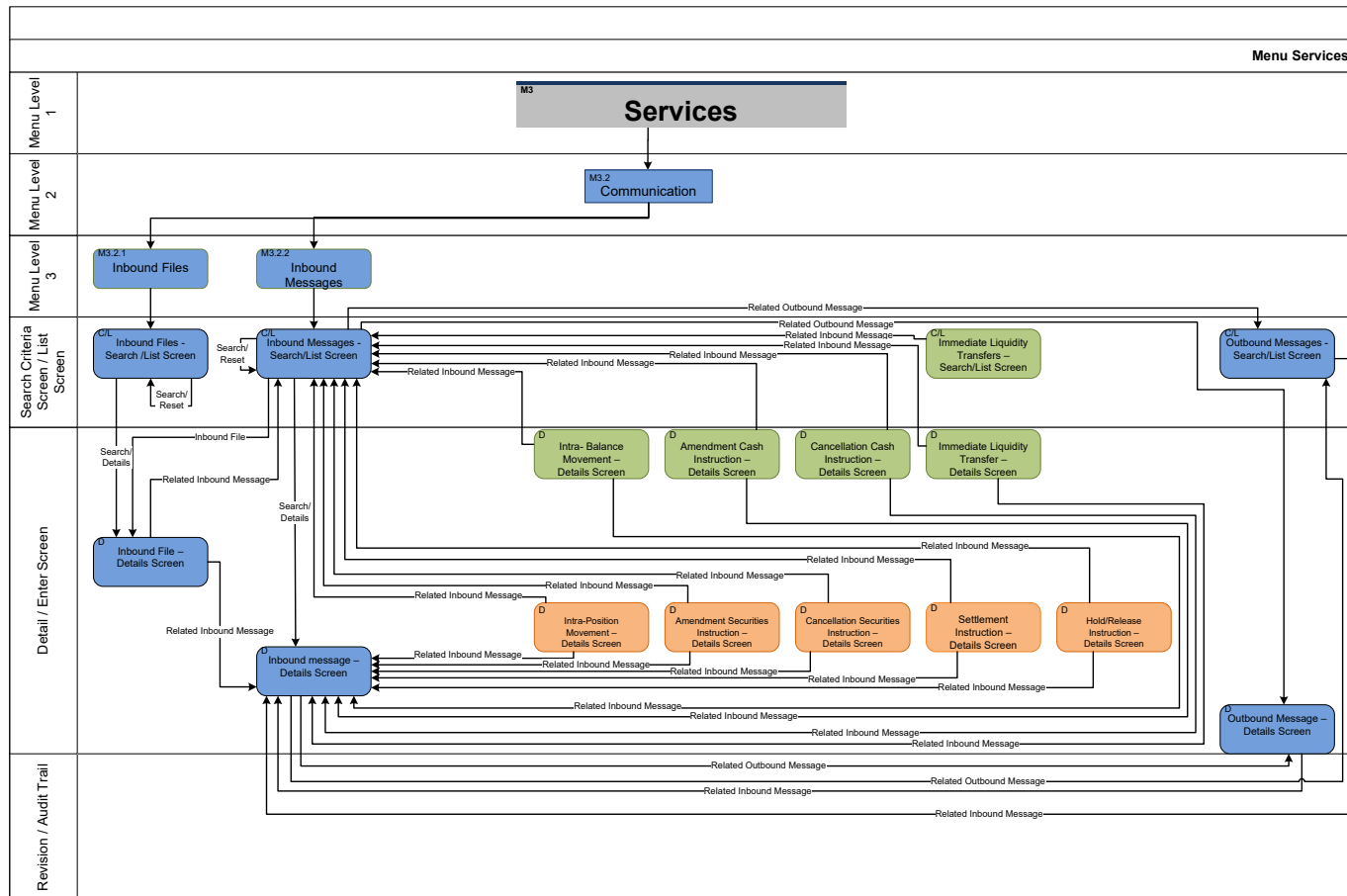
1.4.5 Additional Services V

Menu Services	
Menu Level 1	<div> <div>M3</div> <div>Services</div> </div>
Menu Level 2	<div> <div>M3.1</div> <div>Additional Services</div> </div>
Menu Level 3	<div> <div>M3.1.10</div> <div>User Access Rights Check</div> </div>
Search Criteria Screen / List Screen	<div> <div> <div> <div>UCL</div> <div>User Access Rights - Search/List Screen</div> </div> <div> <div>Search/Reset</div> </div> </div> </div>
Detail / Enter Screen	
Revision / Audit Trail	

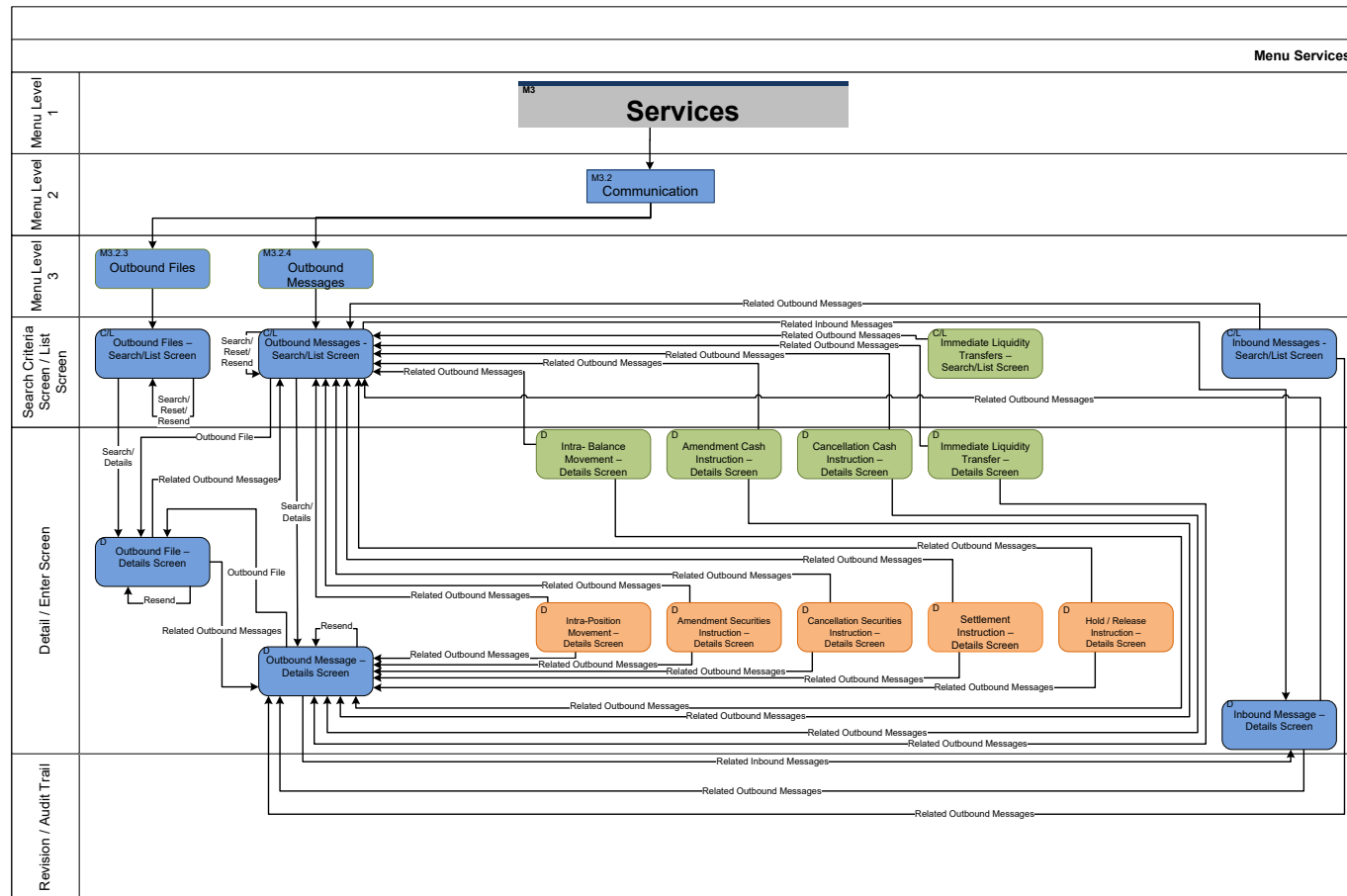
1.4.6 Additional Services VI



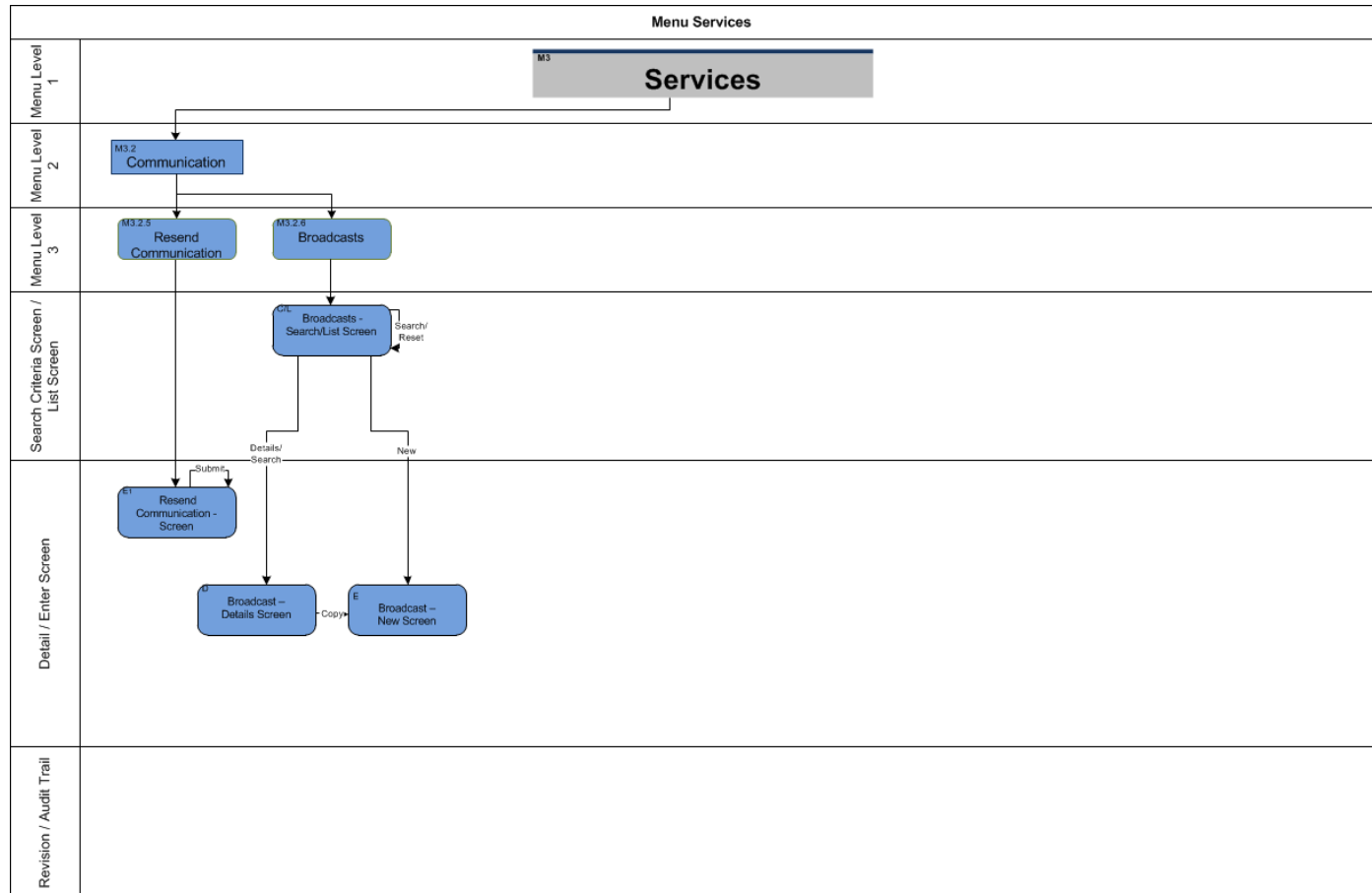
1.4.7 Communication



1.4.8 Communication II

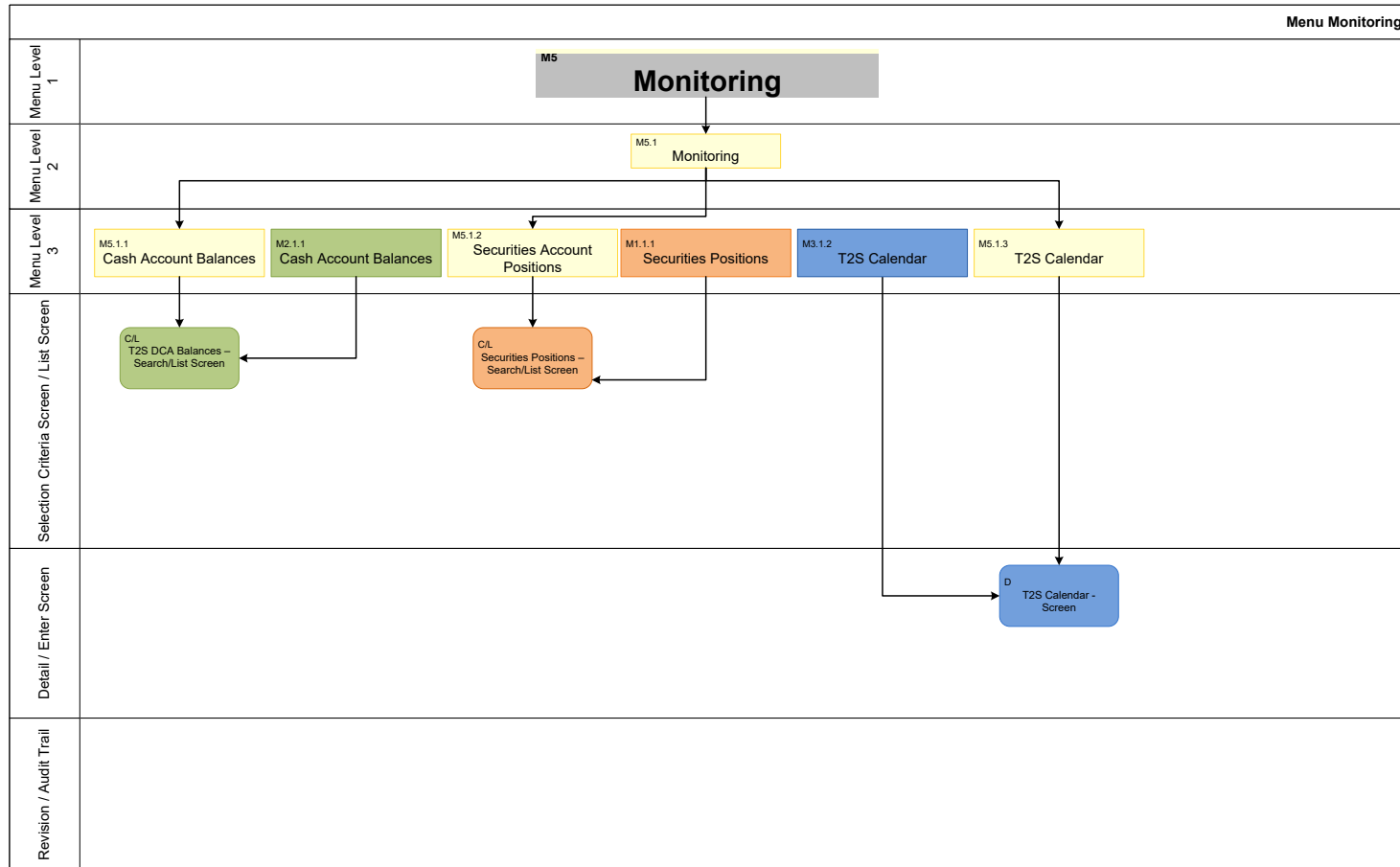


1.4.9 Communication III



1.5 Monitoring

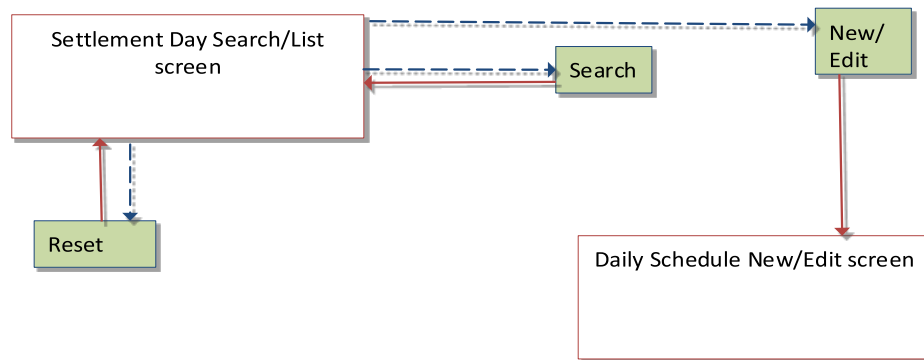
1.5.1 Monitoring



1.6 Business Day Management

1.6.1 Business Day Management

1.6.1.1 Settlement Day



1.6.1.2 Calendar

